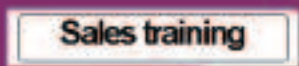


Medical Staff
Office Workers
Entrepreneurs



Security Staff
Event Coordinators
Mailrooms
Manufacturers



BROTHER QL SERIES
PC LABEL PRINTERS

Brother QL Series Label Printers

QL-500 ■ QL-550 ■ QL-650TD

Key features:

Brother QL-500

- Print up to 50 labels per minute*
- New, easy-peel labels
- Print labels up to 2.4 inches wide
- Print banners up to 3 feet long
- Crisp, 300 dpi printing
- Print from Microsoft Word®, Excel®, Outlook® and more
- Print linear and two dimensional bar codes
- Customizable software included
- Windows® and Mac® compatible
- Manual label cutter

Brother QL-550

Includes all of the same features as the Brother QL-500, in addition to:

- An automatic label cutter

Brother QL-650TD

Includes all of the same features as the Brother QL-550, plus:

- Stand-alone time and date labeling
- Print up to 56 labels per minute*
- Shows time, date, message and more
- Serial interface to print ASCII data

For more information visit
www.Brother.com

TECHNICAL SPECIFICATIONS	QL-500	QL-550	QL-650TD
DIFFERENTIATING FEATURES			
Print speed	50 labels per minute*		56 labels per minute*
Use disconnected from PC	No. Use connected to PC only.		Yes
Standard interfaces	USB		USB, plus serial interface for ASCII data****
Built-in templates	Built-in general office and commercial templates		Same as QL-500/550, plus 8 pre-set label designs
Label cutter	Manual cutter	Automatic cutter	Automatic cutter
Included starter roll(s) of labels	DK-1201 Die-cut Standard Address Labels (Starter roll, 100 labels)	DK-1201 Die-cut Standard Address Labels (Starter roll, 100 labels), plus DK-2205 2-3/7" Continuous Paper Tape (Starter roll, 26 feet)	DK-1201 Die-cut Standard Address Labels (Starter roll, 100 labels), plus DK-1218 1" Round Die-cut Labels (Starter roll, 250 labels)
PRINTING FEATURES			
Maximum print width	2.3"		
Print resolution	300 DPI		
Printing method	Thermal print technology - no ink, toner or ribbons needed		
Compatibility	PC and Mac compatible (see System Requirements, below)		
Optional print server	Optional print server PS-9000 available for network environments**		
LABEL-DESIGN FEATURES			
Microsoft® Add-ins	Microsoft® Word, Excel, Outlook		
P-touch Editor software	Print bar codes, graphics, TrueType® fonts, special formatting including frames & tables		
Address Book Software	Store and print commonly used names & addresses		
Database connectivity	Database connectivity for .csv, .txt and .mdb file types		
EASE-OF-USE FEATURES			
Repeat (multi-copy) printing	Yes		
Auto-size feature	Automatically reduces or enlarges text to fit on a label		
Auto sensor	Automatically identifies label type for quick formatting changes		
ADVANCED FEATURES			
Date and Time stamping	When connected to PC or Mac only	When connected to PC or Mac, or Standalone	
Automatic counter for serialization	Yes		
Bar codes	Code 39, Code 128, Codabar, UPC A/E, EAN 8/13/128, Interleaved 2 of 5, Postnet, Laser bar code, ISBN2, ISBN5, PDF 417, Qr code, data matrix		
CARTON CONTENTS			
CD-ROM with PT Editor and Address Book software, drivers and user's manual	Yes		
USB cable	Yes		
SPECIFICATIONS			
Computer	PC and Mac*** compatible		
Operating system	Windows®: 98SE/ME/2000 Pro/XP (Pre-installed). Mac: OS 9.x, OS X, 10.1-10.3.9		
CPU	Intel® Pentium® 266 or higher (700MHz or higher recommended)		
Memory (RAM)	Win 98SE, Me: 64MB or more required		
Hard Disk Free Space	70MB or more		
Interface	USB 1.1 or later		
Other	CD-ROM drive for specification		
Monitor	SVGA, high color or higher graphics card		

OPTIONAL LABEL AND TAPE SUPPLIES



PRE-SIZED PAPER LABELS

- Standard Address Labels
DK-1201 400/roll
1 1/7" x 3 1/2" (29mm x 90mm)
- Large Address Labels
DK-1208 400/roll
1 1/2" x 3 1/2" (38mm x 90mm)
- Small Address Labels
DK-1209 800/roll
1 1/7" x 2 3/7" (29mm x 62mm)
- Shipping Labels
DK-1202 300/roll
2 3/7" x 4" (62mm x 100mm)
- Multi-Purpose/Return Labels
DK-1204 400/roll
2/3" x 2 1/8" (17mm x 54mm)
- File Folder Labels
DK-1203 300/roll
2/3" x 3 7/16" (17mm x 87mm)
- CD/DVD Labels (Film)
DK-1207 100/roll
2 1/3" x 2 1/3" (58mm x 58mm)
- 1" Round Die-Cut Labels (24mm) (Film)
DK-1218 1000/roll
- 1/2" Round Die-Cut Labels (12mm) (Film)
DK-1219 1200/roll



CONTINUOUS TAPES

Durable Film Tapes

- Medium Width Tape
DK-2211
Black Print on White
1 1/7" x 50' (29mm x 15.24M)
- Wide Tape
DK-2212
Black Print on White
2 3/7" x 50' (62mm x 15.24M)
- Wide Tape
DK-2606
Black Print on Yellow
2 3/7" x 50' (62mm x 15.24M)
- Wide Tape
DK-2113
Black Print on Clear
2 3/7" x 50' (62mm x 15.24M)

Durable White Paper Tapes

- Narrow Width Tape
DK-2214
1/2" x 100' (12mm x 30.48M)
- Medium Width Tape
DK-2210
1 1/7" x 100' (29mm x 30.48M)
- Wide Tape
DK-2205
2 3/7" x 100' (62mm x 30.48M)

Removable Adhesive Paper Tapes

- Wide Tape
DK-4205
Black Print on White
2 3/7" x 100' (62mm x 30.48M)
- Wide Tape
DK-4605
Black Print on Yellow
2 3/7" x 100' (62mm x 30.48M)

*Standard address, 4-line, text only (Brother QL-650TD up to 56 labels per minute, standard address, 4-line, text only)

**QL-500 includes Die-cut Standard Address Labels (Starter roll, 100 labels); QL-550 includes Die-cut Standard Address Labels (Starter roll, 100 labels), plus 2-3/7" Continuous Paper Tape (Starter roll, 26 feet); QL-650 includes Die-cut Standard Address Labels (Starter roll, 100 labels), plus 1" Round Die-Cut Labels (Starter roll, 250 labels).

Additional purchase required for all other tape and label supplies.

***Mac compatible to print from included P-touch Editor software only.

****Additional purchase required for serial cable.

© 2005 Brother International Corporation, Bridgewater, N.J. Brother Industries, Ltd., Nagoya, Japan. All rights reserved. All trademarks and registered trademarks referenced herein are the property of their respective companies.

At your side™
brother
CATOLCOMBO

How is your business labeled?



brother[®] At your side.™

QL-500
QL-550
QL-650TD

BROTHER QL SERIES
PC LABEL PRINTERS

Print great labels from your PC or Mac easier and faster than ever before.

No matter what industry you're in, the Brother QL Series Label Printers allow you to print cost-efficient, easy-to-peel labels in a wide variety of shapes and sizes.** Now you can print labels quickly and easily in crisp 300 dpi output. So, even when you have a lot to accomplish, you'll always be one step ahead.

Easy & User Friendly

- Just drop in label rolls
- Print from Microsoft Word®, Excel® or Outlook® applications
- Get creative with our label design software

Label printers you can rely on

- No ink, toner or ribbons to get in your way
- Full technical support
- 1-year warranty

Flexible options for a multitude of uses**

- Choose from 9 pre-sized label rolls for address, shipping, badge, file folder, CD/DVD labels and more
- 9 continuous tapes for printing custom length labels, banners and signs up to 3 feet long

Speed = Efficiency

- Print up to 50 labels per minute with the QL-500/550, or up to 56 labels per minute with the QL-650TD*
- Print one, two or even hundreds of labels at a time
- Manual or automatic label cutter



**Create,
print and go
about your business.**

More options for more applications.



DIE-CUT LABELS

Choose from a variety of pre-sized label rolls**

- Visitor badges
- Parking permits
- Asset/Property bar codes
- Bar code shelf signage
- Employee name badges
- Inventory tagging
- CD/DVD labels
- Mailing/shipping labels
- File folders
- Shelving/drawers/cabinets
- Binder labels
- Student mailings
- Lab samples
- Patient records
- Appointment reminders



CONTINUOUS TAPE

Print labels, signs and banners up to 3 feet long on rolls of continuous tape**

- Warning banners
- Bar code shelf signage
- Promo banners
- Shelving/drawers/cabinets
- Announcement banners
- Warning/Caution signage

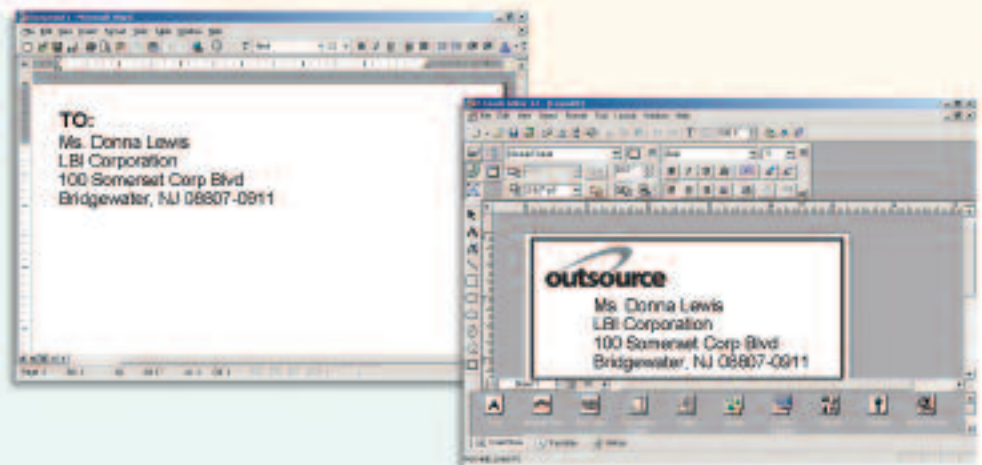


Easy-to-use software for easy-to-make labels

Highlight, click and print from Microsoft Word®, Express® or Outlook® applications.

Or show your creative side and design your own labels with the included software.

Plus, store and print commonly used names and addresses with the included Address Book software.



*Perfect for offices, shipping,
visitor management and more.*

At your side™
brother

QL-500
QL-550



Brother **QL-500** ■ **QL-550**

The Brother QL-500 and QL-550 are fast and easy tools for printing great looking labels.

Print a variety of pre-sized labels up to 2.4 inches wide and banners up to 3 feet long with the easy-to-use Brother QL-500 or QL-550.

- Print up to 50 labels per minute*
- Crisp, 300 dpi printing
- Print from Microsoft Word®, Excel®, Outlook® and other popular software programs
- Print both linear and two dimensional bar codes
- Customize your labels with the included software
- No toners, ink or ribbon needed
- Manual label cutter (Brother QL-500) or automatic tape cutter (Brother QL-550)
- Windows® and Mac® compatible

Brother **QL-650TD**

Stand-alone time and date labeling and the ability to accept ASCII data make the Brother QL-650TD second to none.

Print stored time and date labels directly from your Brother QL-650TD even when it's not hooked up to your computer.

Includes all Brother QL-500 and QL-550 features, plus:

- Crisp, 300 dpi printing at up to 56 labels per minute*
- Customizable software
- Front-panel LCD display shows time, date, message and more
- Automatic label cutter
- Serial interface to print ASCII data
- Windows® and Mac® compatible



At your side™
brother

QL-650TD

*All the functionality of the Brother QL-500/550
plus: Print the time. Print the date.
Print even when you're not at your PC.*

